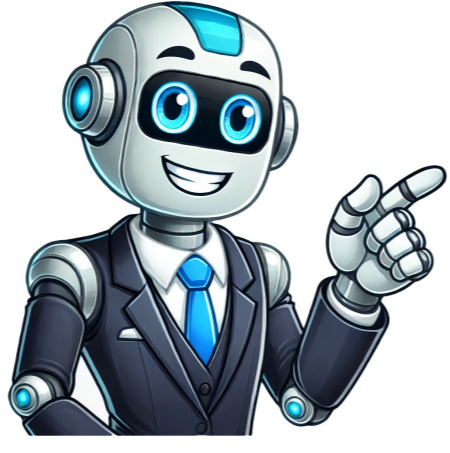


Click Here





Four-figure and six-figure grid references are often considered challenging for students to grasp, which can make teaching them difficult as well. To address this issue, non-geography teachers frequently rely on resources like this one, which aims to boost practitioners' confidence. The resource comprises two educational films made in a school with an experienced geography expert, along with accompanying PowerPoint presentations and practice exercises. Practitioners can utilize the videos alongside the presentations and activities for their own learning or assign them to students as additional practice material. The content of the educational videos was carefully planned, and the presentations were subsequently developed based on these films. The resource includes four-figure grid references and six-figure grid references in both English and Gaelic versions. This lesson is part of a broader Geography unit called Exploring Brazil, designed for students in KS2 (Year 4-6). However, it can also be taught as a standalone lesson and serves as an excellent introduction to using six-figure grid references. The presentation begins by reviewing how to find four-figure grid references before proceeding to demonstrate step-by-step how to find six-figure grid references. The lesson includes two activities for students: 1. Locating Brazilian cities using four-figure grid references. 2. Describing the location of these cities more precisely using six-figure grid references. In terms of difficulty levels, the activities are categorized as follows: \* Easier: Students use mini-grids to locate cities with six-figure grid references. \* Medium: Students first use mini-grids to locate a certain number of cities and then estimate the six-figure grid references for another set of cities. \* Harder: Students estimate the six-figure grid references for all cities without using mini-grids. If you find this resource helpful, please consider reviewing it. As a token of appreciation for your feedback, we will send you a free resource of your choice. You can contact us at [ed@teachitforward.co.uk](mailto:ed@teachitforward.co.uk) with any suggestions or requests. Laminatable Grid References for Teaching Geography A useful teaching geography resource, featuring a 6-figure grid for students to use. The PowerPoint can be used on a white board or with a projector and includes animations and moving objects to engage learners. To support different learning styles, the font is in Comic Sans, which caters to dyslexic learners. Additionally, the resource has been adapted to meet the needs of higher-level learners.

4 and 6 figure grid. 6 figure grid reference example. Four and six figure grid references. 4 and 6 figure grid references booklet. 4 and 6 figure grid references lesson. 4 and 6 figure grid reference worksheet. What is the difference between 4 and 6 figure grid references.